

2018 Becker County Aquatic Invasive Species Program Report

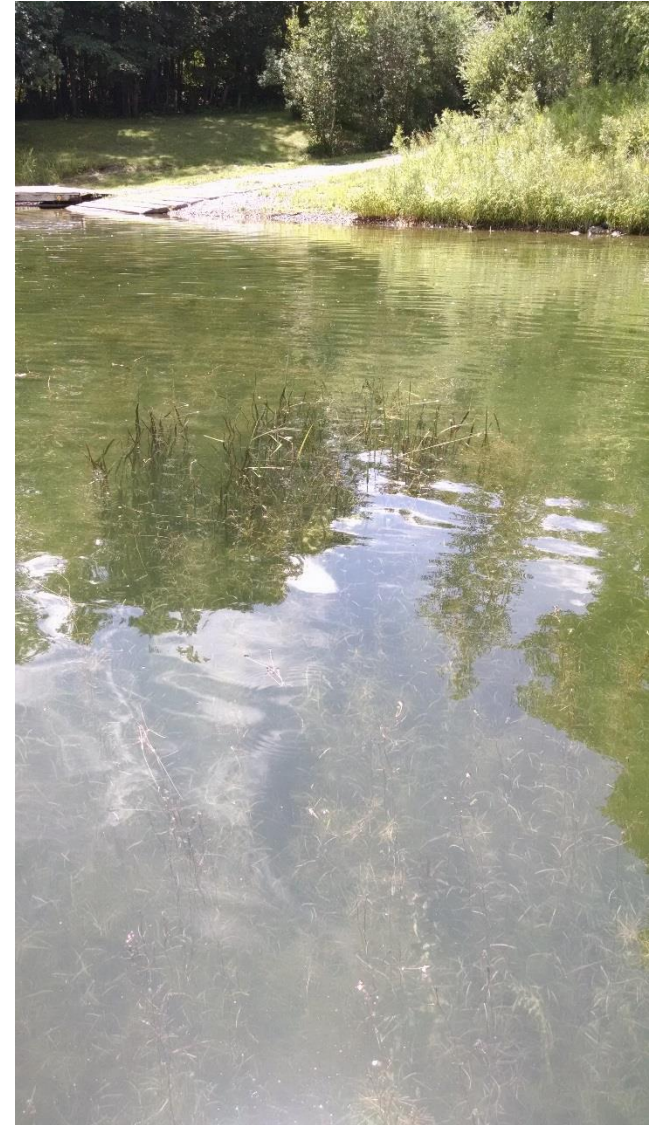
This document outlines Becker SWCD’s efforts to prevent the introduction and spread of aquatic invasive species using county AIS prevention funds per MN Statute 477A. 19. The Becker Soil and Water Conservation District implemented the plan elements below using 2017 and 2018 funds, combined with contributions from lake associations and Becker County.

Element	Activities	2018 Expense
1. Outreach and Education	Printed Materials, Display Booth Materials, TV and Radio Ads, Bar Coasters, Signs	\$12,160.00
2. Inspections	Watercraft Inspectors, Field Supplies, Unemployment, Work Comp	\$266,656.00
3. Decontamination	Equipment, Fuel, Maintenance, Storage	\$12,369.00
4. Monitoring, Treatment, Response	RMB Labs Monitoring	\$14,109.00
5. Professional and Technical	Office Space, Cell Data, Vehicle Maintenance, Fuel, Training	\$77,463.00
6. Operations and Liability	Insurance, Office Supplies	\$4,000.00
Administration	Program Oversight/Planning	\$5,030.00
Total		\$391,787.00



Contents

Outreach and Education.....	3-4
Watercraft Inspection.....	5-6
Watercraft Decontamination.....	7
Monitoring and Management.....	8-10
Proposed 2019 Inspection Hour Allocations.....	11
2017 Entering Inspection Results.....	12
Breakdown of AIS found in waters reported as the last place an entering watercraft was used....	13-14
2018 Budget vs. Actual Expense.....	15
2018 Monthly Income and Expense Report.....	16
Proposed 2018 Budget.....	17



Flowering Rush was first confirmed on Pickerel Lake in 2015. Becker County's AIS funds have been used for spot treatments and lake surveys to contain this infestation.

1. Outreach and Education

In 2018, AIS prevention practices were promoted using printed handouts, a website, radio and television ads, indoor advertising in restrooms, social media sites, a tax statement insert and a variety of presentations and educational displays. The following activities were completed in 2018:



- Indoor ads were placed at Zorbaz, Pit 611, Long Bridge and Holiday Inn. (June-August)
- A ½ page ad was purchased in the local “Summer Scene” magazine. (May-October)
- A ½ page ad was purchased in the Detroit Lakes Chamber of Commerce visitor’s guide.
- A 30 second television commercial was updated and aired on the “Linder’s Angling Buzz” program on Fox Sports North. (May –August) 17 counties shared the cost of this sponsorship.
- A 30 second television commercial was aired on TV3 featuring local fishing guide Brad Laabs (June-July)
- Radio ads were purchased at KDLM 1340/93.1 FM and WAVE 104.1. (June-July)
- 5,000 “Clean your Johnson” bar coasters were delivered to 14 local bars and restaurants.
- AIS prevention practices were promoted on a handout that was included with property tax statements.
- On February 23rd and 24th, a table was staffed at the Explore Lake Life Expo in Fargo.
- On May 1st and December 7th presentations were provided to around 200 5th graders at the Detroit Lakes Middle School.
- On March 24th and 25th, a table was staffed at the Lakes Home and Sports Show in Detroit Lakes.
- On May 10th, an interactive presentation was provided to many 5th grade students from across the county at Ike Fischer’s annual 5th grade tour in Frazee.
- Presentations were also provided to the following lake associations at their annual meetings:
 - 6/8/2018 Island Lake Association**
 - 6/9/2018 Lake Ida Association**
 - 6/16/2017 Big Cormorant Lake Association**
 - 6/23/2016 Long Lake Betterment Association**
- On July 25-28, an educational display table was staffed at the Becker County Fair.
- Updates were provided to members of Becker County COLA during their July and October meetings.

Outreach and Education continued

- Support was provided to the Pelican River Watershed District and Ottertail, Becker and Hubbard COLA groups to host the Minnesota Aquatic Invasive Species Research Center for an update on their research projects. Over 120 people gathered at M-State to attend this event.
- Becker SWCD joined Douglas, Pope, Ottertail, Cass and Aitkin counties to purchase a series of six professionally produced public service announcements that were widely shared on social media and at least 13 television outlets statewide
- An educational map display was developed for University of Minnesota Extension Service's "AquaChautauqua" event on August 9 at Dunton Locks Park.



Public Service Announcement



**FIGHT THE SPREAD OF
AQUATIC INVADERS**

**Clean off and let your lift, dock or
raft dry for **21 DAYS** before
moving to another lake.**

Brought to you by: Counties of Douglas, Otter Tail, Pope, Cass, Becker, Aitkin and LARA
and PLA of Crow Wing County and J&K Marine.

2. Watercraft Inspection

In 2018, 32 watercraft inspectors were hired. Eight of the inspectors were hired as Level 2 inspectors. These individuals were trained to operate mobile decontamination equipment in addition to their watercraft inspection duties. One of the inspectors was hired to conduct inspections at Tulaby and South Twin lakes in Mahnomen County. Becker County has been reimbursed for all associated costs by Mahnomen County. Watercraft inspections in Becker County began on May 12 and concluded on October 15, 2018.

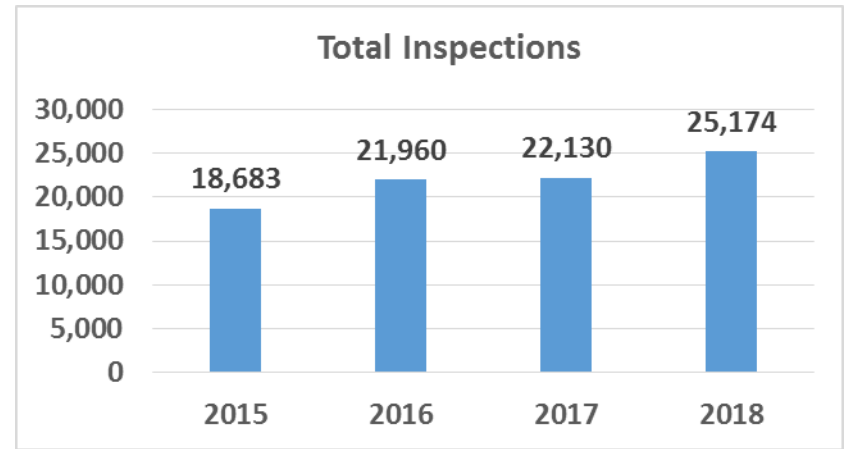
Inspectors identified zebra mussels on or within watercraft attempting to enter Little Cormorant and Island Lake. Decontamination services were provided at Big Cormorant for the boater who attempted to launch at Little Cormorant. The boater entering Island Lake decided not to launch their boat after a plant fragment with attached mussels was found on their boat trailer. Watercraft inspectors also assisted boaters with cleaning and draining 1,259 watercraft that were found with water, plants, mud or invasive species when exiting lakes. Of these, 83 inspections resulted in zebra mussels being removed by hand or with decontamination equipment.

Inspection hours were allocated to individual lakes using a risk score based on the number of access ramps, resorts and the number of inspections per hour completed in 2017. Contributions from lake associations allowed for additional inspection hours at 3 lakes. See page 10 for proposed 2019 inspection hour allocations. The total number of inspections, inspection hours completed and the results of entering watercraft inspections are displayed on the spreadsheets found on pages 12-14. These include an analysis of the responses provided to inspectors when boaters were asked where they last used their watercraft, just prior to the lake where the inspection is taking place. This data indicates that:

- 1951 boaters report last using their watercraft on Zebra Mussel infested waters (12.76%)
- 204 boaters report last using their watercraft on Eurasian Milfoil infested waters (1.33%)
- 142 boaters report last using their watercraft on Spiny Waterflea infested waters (.93%)
- 40 boaters report last using their watercraft on Starry Stonewort infested waters (.26%)

Watercraft Inspection continued

- A total of 14,178 inspection hours were completed in 2018 at 25 public accesses.
- 25,174 inspections were completed.
- Inspectors reported 373 watercraft arriving with plants, water or mud. (2.44% of entering watercraft) *Table 1*
- Inspectors reported 287 watercraft arriving with drain plugs installed. (2.22% of watercraft equipped with plugs) *Table 2*
- In 2018, 2149 boaters reported that they had last used their watercraft at a lake or river on MN’s list of AIS-infested waters. (14.05% of entering watercraft) *Table 3*



	Plants, Water, Mud on arrival #	Plants, Water, Mud on arrival %
2015	368	3.60%
2016	248	1.86%
2017	520	3.92%
2018	373	2.44%

Table 1

	Plug In on arrival #	Plug In on arrival %
2015	282	2.59%
2016	249	2.16%
2017	386	3.45%
2018	287	2.22%

Table 2

	Boats entering from infested waters #	Boats entering from infested waters %
2015	941	8.65%
2016	2081	15.59%
2017	1983	14.96%
2018	2149	14.05%

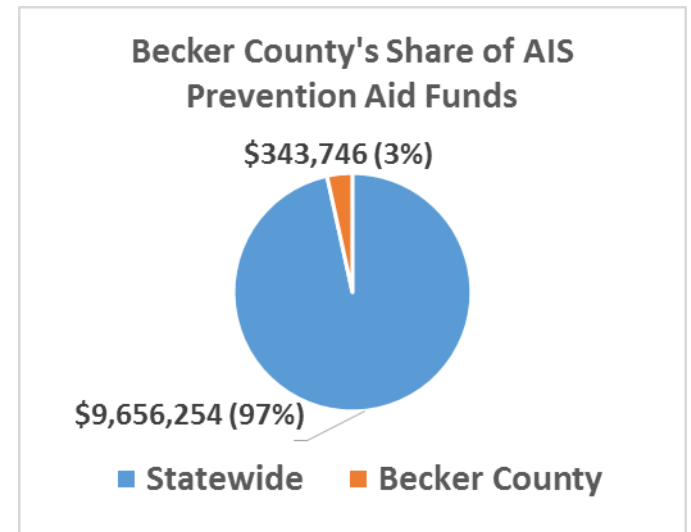
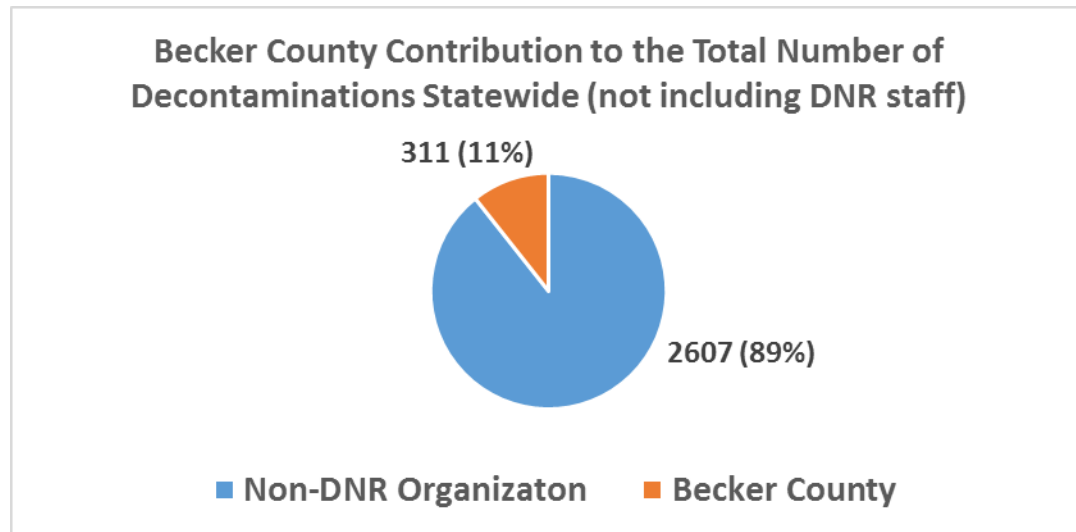
Table 3

3. Watercraft Decontamination

Becker County completed 320 separate hot-water watercraft decontaminations in 2018. 3,574 hours were billed at the Level 2 rate. Watercraft decontamination services were offered at Detroit, Melissa, Sallie and Big Cormorant lakes. Watercraft decontamination was also offered at the SWCD shop on an on-call basis. Watercraft decontamination services were provided to boaters from 7 states and Canada, as well as many local residents and lake service providers. In 2019, decontamination services will again be provided at high-use zebra mussel-infested lakes. While Becker County receives just 3.4% of county AIS prevention aid funds, over 10% of the decontaminations completed in 2018 by non-DNR groups were done by Becker County's Level 2 watercraft inspectors.

Location	Decontaminations
Detroit South	175
Melissa	61
Sallie	31
SWCD Shop	8
Big Cormorant	36
2018 Total	311

	Decontaminations
2015	154
2016	291
2017	342
2018	311



4. Monitoring and Management

Monitoring efforts were completed in summer and fall 2018, with assistance from volunteers and RMB Environmental Labs of Detroit Lakes. Retrieving plants and other items with a tossed rake head attached to a rope can detect invasive plants and zebra mussels. Access sites listed in Table 1 were checked by this method in August and September.

August and September Monitoring	Boyer	Little Cormorant	Net	Toad
Acorn	Buffalo	Little Floyd	Pearl	Town
Bass (by CR#39)	Eagle	Little Sugarbush	Pickerel	Turtle
Bass (by Bad Medicine)	Elbow	Little Toad	Rock	Two Inlets
Bass (by White Earth)	Eunice	Many Point	Round	White Earth
Big Sugarbush	Height of Land (South)	Marshall	Sauer	Wolf
Bijou	Hungry	Maud	Sivertson	
Blueberry	Island	Meadow	Strawberry	
Boot	Little Bemidji	Monson	Tamarac (North and East)	

Table 1

Docks can be examined in late fall as they are removed from lakes to identify zebra mussel infestations. Dock equipment was inspected at the public accesses of the lakes listed in Table 2 in October and November.

Fall Dock Inspection	Eagle	Little Toad	Rock	Town
Acorn	Height of Land (South)	Long	Round	Turtle
Bad Medicine	Island	Many Point	Sauer	Two Inlets
Boot	Lief	Marshall	Sivertson	Upper Cormorant
Boyer	Little Bemidji	Meadow	Straight	
Buffalo	Little Cormorant	Middle Cormorant	Strawberry	
Cotton	Little Sugarbush	Pearl	Toad	

Table 2

On August 18, 2018, over 225 volunteers turned out across Minnesota to participate in the second annual Starry Trek AIS monitoring event. This event was organized by The University of Minnesota Extension Service and the Minnesota AIS Research Center, and was meant to identify new infestations of starry stonewort. Becker SWCD recruited 6 volunteers for this event. After being trained to identify starry stonewort, volunteers searched 15 public accesses that were prioritized as high-risk for starry stonewort based on a model created by UM researchers, along with local information from Becker SWCD. (Table 3) The model took into account factors such as temperature, precipitation, and pH. The DNR confirmed one new finding of starry stonewort from reports made by 2018 Starry Trek participants at Wolf Lake in Hubbard and Beltrami counties. This was the 3rd new infestation of starry stonewort found in 2018. There are now 13 lakes in Minnesota where starry stonewort has been confirmed since first recorded in 2015.

Starry Trek 2018	
Straight	Big Cormorant (2 accesses)
Sallie	Cotton
Melissa	Tamarac (3 accesses)
Detroit (3 accesses)	Long
Lief	

Table 3



RMB Labs of Detroit Lakes was again hired to conduct vegetation surveys at public access sites. RMB’s technicians surveyed 100X100 meter areas surrounding the public accesses listed in Table 4 and did not find any undocumented invasive species.

AIS monitoring efforts can have multiple benefits. When new infestations are confirmed, signs are posted at public accesses and a press release is issued by the DNR, promoting awareness of the situation. Also, when infestations are detected relatively early, chemical and physical control is much more feasible. AIS monitoring will be continued and expanded in 2019, with emphasis on invasive plants and starry stonewort at high-use areas.

Access Sites Monitored by RMB Labs	
Detroit (3 accesses)	Long
Floyd	Big Cormorant (2 accesses)
Sallie	Ida
Cotton	Middle Cormorant
Bad Medicine	Upper Cormorant
Straight	Leif

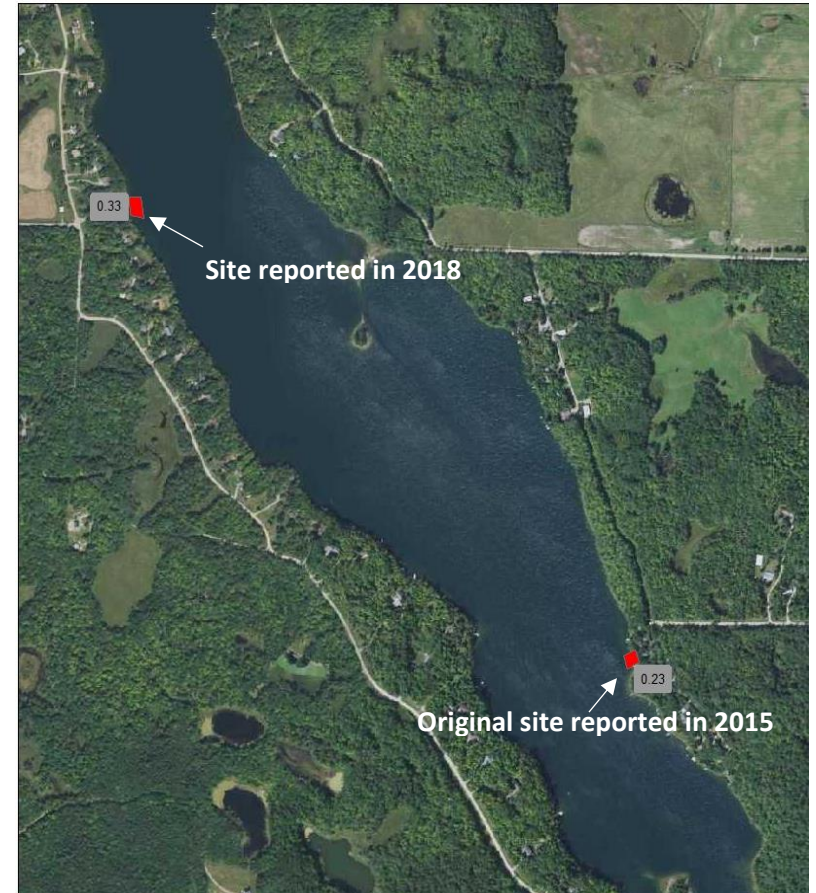
Table 4

Efforts to contain flowering rush at Pickerel Lake were expanded in 2018. Since 2015, Becker SWCD has hired PLM Lake and Land Management to treat a small patch of flowering rush on Pickerel lake. In July 2018, another small patch of flowering rush was reported near the public access on the west side of the lake. On July 12, district staff surveyed the shoreline of Pickerel Lake and confirmed this report but found no additional flowering rush in other areas. The landowner adjacent to the public access approved treatment and a permit was issued to treat both areas in late July. The area was treated in early August, when the follow-up treatment was applied to the original site on the east side of the lake. In 2019, the shoreline area will again be surveyed. Treatments will be conducted as needed, pending landowner and DNR approval.

In 2018, grants were offered to lake associations, watershed districts and other organizations to fund invasive plant management projects. These grants were offered to support efforts to manage invasive aquatic plants near public access sites. Three applications were received in 2018, and each applicant received \$4,000 to assist with their management projects. These projects included:

- Treatment of 11.4 acres of flowering rush by the City of Detroit Lakes along the public beach and adjacent to the access on West Lake Drive.
- Treatment of 35.1 acres of curly-leaf pondweed at Toad Lake.
- Treatment of 42.8 acres of flowering rush at Lake Sallie.

Three grants will be offered in 2019, with priority given to permitted treatment sites near public access areas.

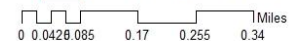


Pickerel (03028700), Becker County
2018 Flowering Rush Treatment
Map by: Mark Ranweiler-MNDNR
Date: July 20, 2018



Legend

2018_Pickerel_FLR_Approved



Proposed inspection hour allocations for 2019

Actual hours completed are subject to change based on boater movement, weather and staff availability. Contributions will be applied at a rate of 14.00 per hour. Hours will be applied as directed by the sponsor, and any unspent funds will be carried over to 2020.

Lake	PWA's (max 2)	# of resorts (max 3)**	2018 Insp. per Hour	2018 Risk Score***	Level	Base Hours 2019	Decon Hours	Adjustments/Carry over*	Total 2019	Notes	
Big Cormorant	2	2	2.37	6.37	5	1000	500	add 250, 237 carry over	1987	High use, ZM infested, 2 accesses, 1 Level 2 Inspector	
Detroit	2	3	2.87	7.87	5	1000	1200	add 250	2450	High use, ZM infested, 3 accesses, 2 Level 2 Inspectors	
Melissa	1	1	2.33	4.33	3	250	900	10 carry over	1160	High use, ZM infested, 2 Level 2 Inspectors	
Bad Medicine	1	3	1.66	5.66	4	500		701.5 carry over	700	501.5 hours can be carried over to 2020	
Cotton	1	0	2.28	3.28	3	250		add 250	500	high use	
Sallie	1	0	1.9	2.9	2	150	900	add 100	1150	ZM infested, 2 level 2 inspectors, add 100 for fall season	
Floyd	1	0	2	3	3	250		add 250	500	ZM infested	
Ida	1	1	3.05	5.05	4	500		subtract 100	400	ZM infested, high use, high amount of same-lake traffic	
Long	1	2	1.43	4.43	3	250		add 150	400	close proximity to ZM Lakes, moderate use	
Little Floyd	1	1	0.76	2.76	2	150		add 100	250	ZM infested, moderate use	
Island	1	3	1.19	5.19	4	500		add 50	550	High fall traffic	
Straight	1	3	2.04	6.04	4	500		subtract 100	400	low fall traffic	
Height of Land	2	0	1.45	3.45	3	250			250		
Two Inlets	1	3	1.73	5.73	4	500		subtract 50	450	moderate use	
Middle Cormorant	1	1	1.77	3.77	3	250		add 150	400	close proximity to ZM Lakes	
Upper Cormorant	1	1	1.88	3.88	3	250		add 150	400	close proximity to ZM Lakes	
Tamarac	2	0	1.96	3.96	3	250			250		
Lief	1	2	1.62	4.62	3	250			250	close proximity to ZM Lakes	
Many Point	1	1	0.74	2.74	2	150		add 100	250	upstream of Tamarac NWR	
Toad	1	2	2.34	5.34	4	500			500		
Little Cormorant	1	0	1.45	2.45	2	150		add 100	250	close proximity to ZM Lakes	
Boot	1	2	2.13	5.13	4	500		subtract 350	150	Saturday resort traffic is priority	
Flex									200	other lakes or special events	
Total						8,350	3,500	add 1947	13,797		
*Unused inspection hours are carried over from 2018								Level 1 (0-2.2) Lake shares a pool of dedicated inspection hours			
** Based on data from Becker Co. Assessor's office 11/15/18								Level 2 (2.2-2.99) 150 dedicated inspection hours			
# of Public Accesses (max 2) + # of Resorts (max 3) + 2018 Inspections per hour = RISK SCORE								Level 3 (3-4.99) 250 dedicated inspection hours			
								Level 4 (5+) 500 dedicated inspection hours (1 access point)			
								Level 5 (5+) 1000 dedicated inspection hours (Must have 2 access points or more)			

2018 Entering Inspection Results

Lake	Billed Hours**	Inspections Per Hour**	Total Inspections	Entering	Exiting	Courtesy	Plug In %*	Plug In #	Plants/Mud/Water on Arrival %	Plants/Mud/Water on Arrival #	Entering from Infested waters
Big Cormorant	2311.75	2.37	4082	2512	1569	1	1.00%	21	0.48%	12	345 (13.73%)
Detroit	2387.5	2.87	5191	3210	1963	18	3.50%	89	1.21%	39	406 (12.65%)
Melissa	1312.25	2.33	2037	1152	865	20	5.06%	47	2.26%	26	224 (19.44%)
Bad Medicine	798.5	1.66	1327	793	533	1	0.67%	5	22.19%	176*	95 (11.97%)
Cotton	518.25	2.28	1185	765	419	1	0.48%	3	0.39%	3	120 (15.7%)
Sallie	1081.5	1.90	1389	748	640	1	3.77%	24	1.47%	11	171 (22.86%)
Floyd	577.25	2.00	1160	710	449	1	0.17%	1	1.27%	9	108 (15.21%)
Ida	359.5	3.05	1100	758	342	0	3.47%	22	1.19%	9	65 (8.58%)
Long	518	1.43	742	449	291	2	1.63%	6	1.56%	7	72 (16.04%)
Little Floyd	290	0.76	219	138	81	0	0	0	0.72%	1	31 (22.46%)
Island	750.25	1.19	896	483	413	0	2.48%	11	0.83%	4	51 (10.56%)
Straight	447.25	2.04	911	499	412	0	0.95%	4	0.80%	4	34 (6.81%)
Height of Land	282	1.45	408	205	203	0	3.39%	6	1.46%	3	11 (5.37%)
Two Inlets	471.5	1.73	745	419	326	0	2.20%	8	1.19%	5	73 (17.42%)
Middle Cormorant	400.5	1.77	709	467	242	0	1.52%	6	1.71%	8	103 (22.06%)
Upper Cormorant	421.5	1.88	793	471	321	1	1.22%	5	4.25%	20	70 (14.86%)
Tamarac	285.5	1.96	561	337	224	0	.60%	2	0.00%	0	26 (7.72%)
Lief	277	1.62	449	322	127	0	3.07%	8	0.31%	1	69 (20.78%)
Many Point	111	0.68	75	47	28	0	0	0	12.77%	6	11 (23.40%)
Toad	360.25	2.41	867	556	305	6	1%	5	3.96%	22	29 (5.52%)
Little Cormorant	198	1.45	288	216	72	0	3.06%	5	2.31%	5	29 (13.43%)
Boot	18.75	2.13	40	33	7	0	27.27%	9	6.06%	2	6 (18.18%)
Totals	14,178	2.07**	25,174	15,290	9,832	52	2.22%*	287	2.44%	373	2149 (14.05%)
Corrected Hours**	12162.25										
* 2.22% of entering watercraft equipped with drain plugs arrived with the plug installed (2,357 lifts, docks, pontoons and canoes/kayaks excluded)										*At Bad Medicine, 132 entries were for residual water found in watercrafts. 44 of the entries were for plants or mud. 1 entering watercraft arrived with water contained by a drain plug.	
** To calculate the number of inspections per hour, total hours are corrected for occasions when 2 inspectors are working together.											

2018 Entering Inspection Results- Continued

	ZM	ZM,EWM	ZM, EWM, SWF	EWM	SWF	SSW	ZM, SSW	ZM, EWM, SSW	ZM, EWM, Bighead and Silver Carp
Big Cormorant	311	15	4	4	14	3	5	0	0
Detroit	322	22	8	15	29	3	2	1	4
Melissa	198	5	2	6	10	0	2	1	0
Bad Medicine	67	2	1	5	12	1	2	3	1
Cotton	108	3	1	0	6	2	0	0	0
Sallie	154	3	5	3	6	0	0	0	0
Floyd	91	7	1	2	5	0	2	0	0
Ida	63	0	0	0	2	0	0	0	0
Long	68	1	0	1	2	0	0	0	0
Little Floyd	31	0	0	0	0	0	0	0	0
Island	37	5	1	4	3	0	1	0	0
Straight	16	1	0	7	8	0	1	1	0
Height of Land	8	1	0	0	1	1	0	0	0
Two Inlets	28	14	0	21	5	2	3	0	0
Middle Cormorant	91	3	0	2	6	0	1	0	0
Upper Cormorant	63	0	1	2	3	0	1	0	0
Tamarac	20	2	0	1	2	0	0	1	0
Lief	69	0	0	0	0	0	0	0	0
Many Point	8	1	0	0	2	0	0	0	0
Toad	25	0	1	2	0	0	0	1	0
Little Cormorant	28	0	0	1	0	0	0	0	0
Boot	0	2	0	3	1	0	0	0	0
Totals	1806*	87	25**	79	117	12	20	8	5

*15 entering watercraft users reported that they had last launched at the Mississippi River. The Mississippi River has a variety of invasive species occurring in different locations. For this analysis these inspections were recorded as visits from a Zebra Mussel infested water.

**2 entering watercraft users reported that they last had launched at Lake Superior, which has a variety of invasive species. For this analysis, these visits were recorded as ZM, EWM, SWF, as these species are all found in some Lake Superior harbors.

*** 5 entering watercraft users reported that they had last launched at the St. Croix River, which has a variety of invasive species occurring in different locations. For this analysis, these inspections were recorded as EWM, ZM, Bighead and Silver Carp, as these species have been documented in the lower St. Croix.

ZM = Zebra Mussel	EWM = Eurasian Milfoil	SWF = Spiny Waterflea	SSW = Starry Stonewort
--------------------------	-------------------------------	------------------------------	-------------------------------

2018 Entering Inspection Results- Continued

	Out of State	Same Lake	Not on Survey List	Lake Service Provider	Not on infested waters list	Dock/Lift	Unknown	Storage	Prefers not to answer
Big Cormorant	28	1334	4	2	299	17	176	296	0
Detroit	66	2243	38	13	282	35	97	30	0
Melissa	49	664	0	26	125	12	51	0	1
Bad Medicine	5	298	0	9	310	4	73	0	0
Cotton	5	492	0	4	135	7	0	2	0
Sallie	25	357	2	6	112	7	67	1	0
Floyd	10	417	3	0	98	6	35	33	0
Ida	1	614	0	0	61	1	15	0	1
Long	10	233	0	0	58	5	71	0	0
Little Floyd	0	41	0	0	23	1	1	41	0
Island	14	161	0	0	162	1	17	77	0
Straight	0	266	10	0	170	0	19	0	0
Height of Land	1	71	0	0	65	0	26	31	0
Two Inlets	32	178	0	0	120	5	11	0	0
Middle Cormorant	23	198	0	0	69	0	72	2	0
Upper Cormorant	17	242	0	2	71	2	64	0	3
Tamarac	4	110	0	0	112	0	62	23	0
Lief	7	178	0	0	46	1	20	0	1
Many Point	0	13	2	0	17	0	4	0	0
Toad	3	409	0	0	106	0	8	0	1
Little Cormorant	1	148	0	1	32	1	4	0	0
Boot	10	10	0	0	4	0	3	0	0
Totals	311	8677	59	63	2477	105	896	536	7

Element	Activities	2018 Budget	2018 Actual	Notes
1. Outreach and Education	Newspaper Ads, Print Materials, Tax Insert, Media Projects, Radio Ads, Indoor Ads, Bar Coasters, Conferences	\$12,100	\$12,160	
2. Inspections	Watercraft Inspectors, Field Supplies	\$312,832	\$266,656*	2018 Budget estimate was based on a higher hourly rate than was offered in 2018. Did not complete all budgeted hours in 2018. \$7,340 was spent to provide inspections for Mahnomon Co. (reimbursed 10/1/18)
3. Decontamination	Equipment, Fuel, Truck Maintenance, Field Supplies, Storage	\$14,100	\$12,369*	
4. Monitoring/Treatment/Response	AIS Monitoring and Management Grants	\$38,374	\$14,109	Offered grants for management instead of reserving 10% of funds.
5. Professional and Technical Services	Coordinator, Office Space, Cell Data, Vehicle Maintenance, Fuel, Trainings	\$56,906	\$77,463*	\$16,755 was provided by Becker County to offset coordinator position costs.
6. Operations, Liability, Administration	Insurance, Office Supplies	\$9,150	\$9,030*	
Total		\$443,462	\$391,787	

*DEC 2018 expenses estimated

Income	Jan-18	Feb-18	Mar-18	Apr-18	May-18	Jun-18	Jul-18	Aug-18	Sep-18	Oct-18	Nov-18	Dec-18	Total
AIS Prevention Aid							171,873					171,873	343,746
Lake Association/SWCD Match				300	2,000					7,340			9,640
AIS Prevention Coordinator		8,378					8,378						16,755
DNR Inspection Grant													0
DNR Public Awareness Grant													0
2017 Carryover	102,603*												102,603
Misc. Income				6,375	5,350	825	1,225			310			14,085
Total Income	102,603	8,378	0	6,675	7,350	825	181,475	0	0	7,650	0	171,873	486,829
Expense													Total
Education/Outreach	1,588		845	8,401	7,838	828	3,370	1,908	868	288			25,935**
Inspections and Supplies	231		90	2,090	181	490	59	156,480	55,372	1,180		50,483	266,656
Decontamination	543	432	434	571	1,263	4,562	963	771	940	547	879	465	12,369
Monitoring, Treatment, and RR				68		4,000		27	8,000	2,015			14,109
Professional and Technical	5,856	6,067	5,850	5,925	5,942	8,022	7,345	6,331	6,302	6,249	7,499	6,075	77,463
Operations & Liability	4,000												4,000
Administration	151	285	201	491	1,271	362	311	1,001	148	94	175	540	5,030
Total Expense	12,369	6,784	7,420	17,547	16,495	18,264	12,048	166,517	71,630	10,373	8,553	57,563	405,562

81,266

Notes: **Projected figures**

*Final 2017 carry-over figure of \$105,111 was based on estimated of Dec 17' expenses. Actual 2017 to 2018 carry-over was \$102,603. To allow for management grants, no carry-over funds will be reserved specifically for future management efforts.

** \$13,775 in 2018 Education/Outreach expenses represents funds from 18 counties that passed through for the Linder's Angling Buzz TV Commercial. \$12,160 of Becker County's AIS Prevention funds were used for Education/Outreach in 2018.

Proposed 2019 Budget

Revenue	2019 Proposed	2019 Totals
MN State AIS Prevention Aid	\$344,262	
County Contribution	\$20,000	
Sponsorship Funds		
*Lake Association/LGU		
MN DNR Inspection Grant		
MN DNR Public Awareness		
Fund Carry over	\$81,266	
Total Revenue		\$445,528
Expense		
OUTREACH		
Education & Training	\$500	
Indoor Advertising	\$1900	
Media Collaboration	\$1000	
Newspaper / Radio	\$2500	
Printed Materials	\$200	
Signage / Updates	\$200	
Tax Insert	\$1300	
Sub Total		\$7600
INSPECTIONS		
Field Supplies	\$2,000	
Level 1&2 Inspectors	\$229,582	
Recruitment	\$600	
Worker's Comp	\$8,000	
Unemployment	\$8,000	
Sub Total		\$248,182

DECONTAMINATION		
Field Supplies	\$1000	
Fuel (Gas/Oil)	\$2000	
Maintenance	\$2500	
Shop / Storage Fees	\$5000	
Unit Purchase		
Utilities	\$900	
Vehicle Purchase		
Sub Total		\$11,400
MONITORING & RAPID RESPONSE		
Management Grants	\$12,000	
Technical Services	\$2,200	
Sub Total		\$14,200
PROFESSIONAL & TECHNICAL		
AIS Coordinator	\$69,960	
Fuel (Gas/Oil)	\$600	
Furnishings/Signage		
Office Space	\$5,040	
Tech-Phone-Cell Data	\$1,500	
Training & Certification	\$500	
Vehicle Maintenance	\$250	
Sub Total		\$77,850
ADMINISTRATION		
Program Admin (3%)	\$4500	
Liability Insurance	\$4000	
Office Supplies	\$150	
Sub Total		\$8,650
Total Expense		\$367,882